



**canso**  
civil air navigation services organisation

# **CADENA TROPICAL DISTURBANCE UPDATE**

**TRANSFORMING**  
GLOBAL ATM PERFORMANCE

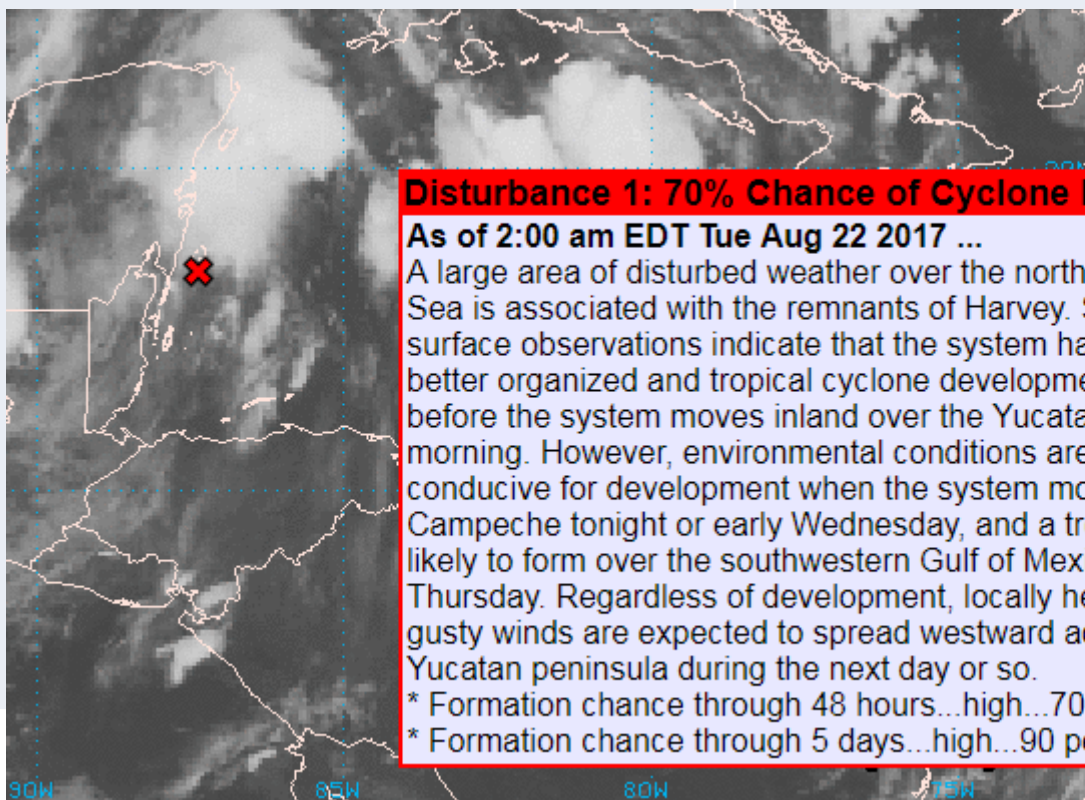
**TUESDAY, AUGUST 22, 2017 1000 UTC**

## CADENA TROPICAL DISTURBANCE UPDATE – AUGUST 22, 2017 1000 UTC

# SENEAM

### PROJECTED PATH IN YOUR AIRSPACE

### PROJECTED IMPACT AND DURATION



#### **Disturbance 1: 70% Chance of Cyclone Formation in 48 Hours**

**As of 2:00 am EDT Tue Aug 22 2017 ...**

A large area of disturbed weather over the northwestern Caribbean Sea is associated with the remnants of Harvey. Satellite images and surface observations indicate that the system has not become better organized and tropical cyclone development is not expected before the system moves inland over the Yucatan peninsula this morning. However, environmental conditions are expected to be conducive for development when the system moves over the Bay of Campeche tonight or early Wednesday, and a tropical depression is likely to form over the southwestern Gulf of Mexico on Wednesday or Thursday. Regardless of development, locally heavy rainfall and gusty winds are expected to spread westward across Belize and the Yucatan peninsula during the next day or so.

\* Formation chance through 48 hours...high...70 percent.

\* Formation chance through 5 days...high...90 percent.



**TRANSFORMING**  
GLOBAL ATM PERFORMANCE

## CADENA TROPICAL DISTURBANCE UPDATE – AUGUST 22, 2017 1000 UTC

### SENEAM

STAFFING ISSUES	✓ EQUIPMENT OUTAGES (AIRPORT AND ENROUTE) ✓ PRIORITY OF EQUIPMENT RESTORATION
<ul style="list-style-type: none"><li>NORMAL</li></ul>	OUTAGES: <ul style="list-style-type: none"><li>NO OUTAGES EXPECTED AT THIS TIME</li></ul> PRIORITY: <ul style="list-style-type: none"><li>N/A</li></ul>

## CADENA TROPICAL DISTURBANCE UPDATE – AUGUST 22, 2017 1000 UTC

### SENEAM

ROUTE CLOSURES / PLANNED RE-ROUTES	PLANNED TRAFFIC MANAGEMENT MEASURES
TO BE DETERMINED.  <b>ON ALERT:</b>  <b>Routes out/in CUN</b> <b>Routes out/in MID</b> <b>Routes out/in CPE</b>	TRAFFIC MANAGEMENT MEASURES (TMMs) MAY BE APPLIED TACTICALLY



**TRANSFORMING**  
GLOBAL ATM PERFORMANCE

**canso**

## CADENA TROPICAL DISTURBANCE UPDATE – AUGUST 22, 2017 1000 UTC

### SENEAM

#### OTHER ISSUES

NONE



TRANSFORMING  
GLOBAL ATM PERFORMANCE